






**REPOSE CAN BE CLEANED AND REUSED**




WIPE CLEAN



DO NOT  
DRY CLEAN



DO NOT  
TUMBLE DRY




DO NOT  
IRON

**REPOSE CAN BE CLEANED WITH SOAP OR DETERGENT AND WATER AND CAN BE DISINFECTED IN ACCORDANCE WITH THE INFECTION CONTROL POLICY FOR STANDARD MATTRESSES ALLOW TO DRY BEFORE USE OR STORAGE**

**REPOSE IS SUPPLIED WITH A MANUFACTURERS WARRANTY FOR 12 MONTHS FROM DATE OF MANUFACTURE**

---

**IMPORTANT NOTICE**  
CHECK PRODUCT DAILY TO ENSURE CORRECT INFLATION LEVEL IN CASE OF DOUBT, REPEAT PUMPING PROCEDURES WITH THE PATIENT OFF THE PRODUCT


**KEEP AWAY FROM DIRECT HEAT AND SHARP OBJECTS**

#### Indications for use

Repose products provide effective pressure redistribution for all persons at risk of developing pressure ulcers, including those assessed as very high risk. Repose is also appropriate for users with pressure related tissue damage - clinical supervision is advised where the damage is severe

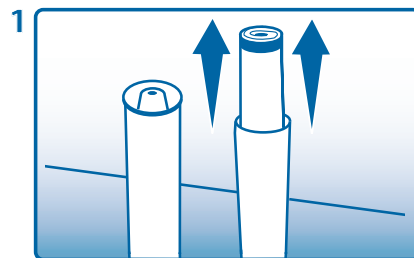
#### Limitations for use

- Repose is not suitable for the following:
- Persons weighing in excess of 139kg
  - Persons with unstable spinal fractures
  - Where body shape is such that the person cannot be fully supported by the Repose mattress overlay or cushion
  - The Repose mattress overlay is suitable for use on top of a bed or trolley mattress. Use side rails in accordance with manufacturer's instructions and appropriate risk assessment
  - The Repose cushion is intended for use on a static chair fitted with arm rests

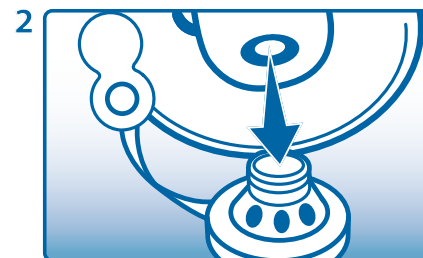
#### Precautions

- If deterioration in skin condition is noted, clinical advice should be sought and, if so advised, use of the product discontinued
- Avoid direct contact with heat and sharp objects
- When deflated, keep away from babies and small children
- Keep away from pets

### Instructions for user



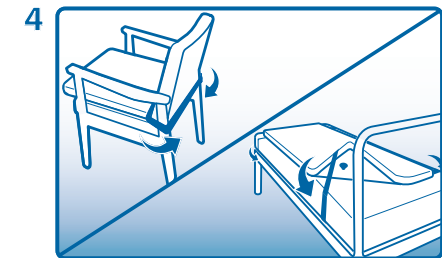
Lift outer tube and remove Repose from inner tube



Using reassembled pump, connect to valve and inflate Repose

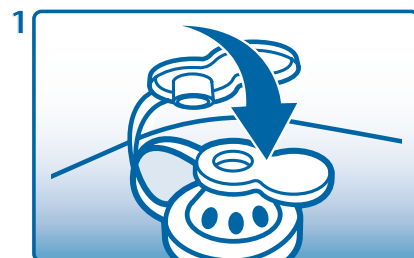


Pump until air is heard escaping from the valve. Wait until you no longer hear air escaping. Disconnect pump and replace the dust cap over the valve on the Repose

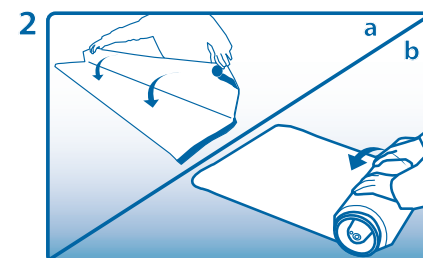


Turn Repose over with valve facing downwards and away from patient. Secure Repose using the elasticated fixings

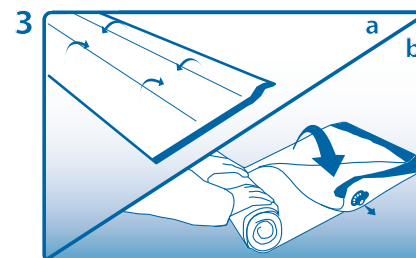
### Deflation and repackaging



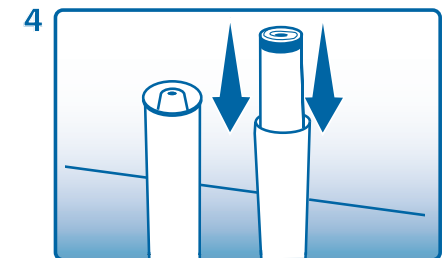
Insert end cap into valve and allow air to escape



Fold Repose as shown and roll from the opposite end allowing air to escape



Re-fold Repose as shown and re-roll as tightly as possible to ensure all air has been removed



Return Repose to inner tube and reassemble pump for storage

Durability

Simplicity

Efficacy