

Repose[®] Foot Protector

Order Code: 6501100

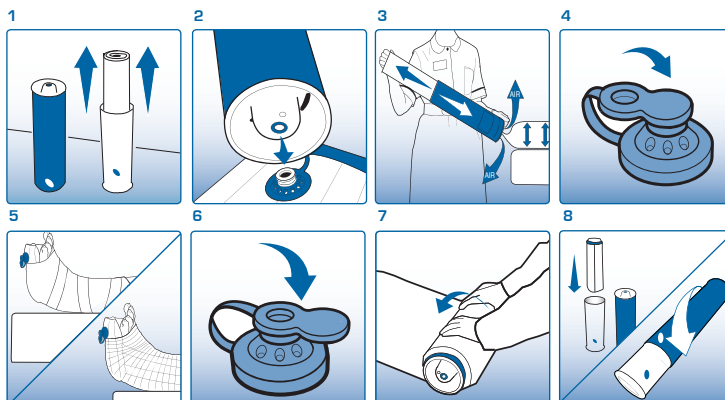


Designed to off-load pressure from the heels

Repose is an effective aid in the prevention of pressure ulceration for all patients including those assessed as very high risk, and for the treatment of existing pressure ulcers. Clinical supervision is advised if damage is severe.

To Inflate

- 1 Remove Foot Protector from the tube, refit the two tubes together to form a pump
- 2 Connect the valve on the pump to the valve on the Foot Protector - Push to fit
- 3 Inflate until you hear air exhausting from the pump valve. Discontinue pumping and wait until you no longer hear air escaping
- 4 Cover the valve using the solid end of the valve cap
- 5 Ensure valve is on the outside of the Foot Protector and secure using a light bandage or stocking



To Deflate

- 6 Insert the open end of the valve cap into the valve. Air can now escape from the valve allowing the Foot Protector to deflate
- 7 Roll up the device starting at the point furthest away from the valve. Continue until all air is expelled.
- 8 Clean, and allow to dry. Replace Foot Protector into the pump. Refit the two tubes together and rotate outer tube until it clicks closed

Please note, Repose is not suitable for the following:

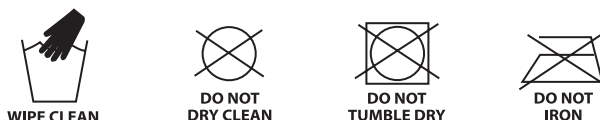
- Where the size or shape of the person's limb is such that it cannot be fully supported by the Repose Foot Protector.

Check device daily to ensure proper inflation level. In case of doubt, repeat inflation procedure with the user off the product.

Keep away from babies, small children and pets. Avoid contact with heat and sharp objects

If deterioration in skin condition is noted, seek specialist advice.

REPOSE CAN BE CLEANED AND REUSED



REPOSE CAN BE CLEANED WITH SOAP OR DETERGENT AND WATER AND CAN BE DISINFECTED IN ACCORDANCE WITH LHHT CLEANING GUIDELINES FOR STANDARD MATTRESSES. ALCOHOL & PHENOL BASED DISINFECTANTS SHOULD NOT BE USED ALLOW TO DRY BEFORE USE OR STORAGE. REPOSE IS SUPPLIED WITH A MANUFACTURERS WARRANTY FOR 24 MONTHS FROM DATE OF DISPATCH.

IMPORTANT NOTICE

CHECK PRODUCT DAILY TO ENSURE CORRECT INFLATION LEVEL IN CASE OF DOUBT, REPEAT PUMPING PROCEDURES WITH THE PATIENT OFF THE PRODUCT.

KEEP AWAY FROM DIRECT HEAT AND SHARPS OBJECT